



HIGHLAND PRESBYTERIAN CHURCH

Rev. John V. Carlson, Pastor

2011 CAPITAL CAMPAIGN

701 Highland Road, Street, MD 21154 • 410-452-9394 • www.highland-presbyterian-church.org • email: highpres@zoominternet.net

Dear Members of the Highland Family,

It's here! After many, many months of talking, wondering, planning, questioning...it's here! The Capital Campaign is under way!

What a great opportunity God has given us to minister not only to those within the church family, but also to our community! Over many months leaders at Highland have pondered the needs, assessed our resources, and discerned God's plan for us to grow by providing a greatly improved physical facility.

With God's guidance and with your help, we will upgrade our wonderful and beloved church building to offer modernized bathrooms, enlarged kitchen space, and easy, secure passage from one floor to the next to serve those unable to navigate the stairs easily, including the elderly, those with small children, and the many church helpers who must move chairs and other equipment upstairs or down.

With your help, we will be able to help fulfill our mission of "doing God's work" by making our facilities more accessible for all people, and more attractive to the entire community, members and non-members alike. I believe that when we are finished, our only question will be, "Why did we wait so long?"

Your elected officers, your Capital Campaign team and I are all making our plans to pledge generously to this effort. I pray you will do the same.

Blessings now and always,

Pastor Jack



I was glad when they said to me, "let us go to the house of the Lord." – Psalm 122:1

HIGHLAND PRESBYTERIAN CHURCH MISSION STATEMENT

Highland Presbyterian Church is a family of believers in Jesus Christ,
worshiping God, learning God's ways, doing God's work.

A HISTORY OF HIGHLAND PRESBYTERIAN CHURCH

In the 18th century, Scotch Presbyterian settlers of lower York and northern Harford counties gathered at a small church near Muddy Creek known as “Log Church in the Barrens.” Presbyterians from this area traveled the long and rough roadways to this rustic church because there were no other Presbyterian churches until the mid-1800s when Slate Ridge and North Bend churches were built.

By 1885 the prosperous farming families of Highland considered pooling their resources to build a new church at Highland. In just two years enough people were committed to the project that adequate funds were raised and a charter was secured. James P. Street, John W. Galbreath, George A. Davis, and Hugh T. Heaps were appointed as trustees, and served as the building committee.

The name of Drucilla Streett should be familiar to everyone who attends Highland – her name is honored by her family in the beautiful round “rose window” above the pulpit. She is honored by all for donating the land across from the church, now our picnic grove, that was used in the early years as a place to hitch and shelter horses. She had given the land for the church, but the church location across from Mrs. Streett’s gifted land was deemed more suitable for the building and cemetery, likely due to its greater size.

The construction of our beautiful Gothic sanctuary, including the stained glass windows, that many would agree are among the loveliest in the county, the roof made of slate cut into a pleasing pattern, and the 65-foot bell tower was begun in 1888 and finished the following year. The first service was held in January 1890.

With a substantial growth in membership over the next 40 years, in 1932 it was decided that more Sunday School space and a social hall were needed. The congregation worked hard to raise the funds needed to build the addition that includes our assembly room where we now meet after worship service, two classrooms that are currently offices, and a small stage. On the basement level a kitchen, social hall and nursery were added. About 20 years later, in 1954, an office and study for the pastor, with its own entrance, were added.

The congregation had grown even larger by 1969 and more space was needed for social events and classrooms, as well as new restrooms. The planned addition was an ambitious project that would double the size of the church, and contributions were made by the congregation to accomplish this goal.

Now, more than 40 years after the last addition, use of Fellowship Hall by the congregation and the community is severely hampered because people have difficulty negotiating the many stairs from the sanctuary level to the Fellowship Hall. Additionally, our restrooms are not conveniently located, attractive, or accessible to all.

The proposed improvements will greatly improve the usability of our Fellowship Hall. Everyone, not only those with physical limitations, but also young parents with children and folks carrying heavy chairs and tables, will greatly benefit from an elevator and same-level restroom facilities.



HIGHLAND PRESBYTERIAN CHURCH



BUILDING FOR OUR FUTURE



Our church building is sacred space to all of us. It is the center of our church life, the place to which we come, and from which we go, to carry out our mission to worship God, learn God's ways, and do God's work.

Through our capital campaign, we aim to "Build for Our Future" by improving our church building to better serve the needs of the congregation and members of our community.

PLANNED ENHANCEMENTS INCLUDE

An elevator to enable easy access to all levels of our building

The elevator will open on three levels:

1. the upstairs floor into the assembly room
2. the original downstairs floor near the Clothing Closet
3. the Fellowship Hall floor

The location of the elevator will allow church members, visitors, and those in the community to attend meetings, luncheons, dinners, reunions, and all sorts of functions anywhere in the building.

The elevator will be equipped with two doors, one opening toward the sanctuary and the other toward the Fellowship Hall. This will provide greater functionality, enabling passengers to move directly to and from meeting spots.

Modern and fully accessible restroom facilities on both the upper and lower levels

New men's and women's rooms on the Fellowship Hall level will be connected to the hall. All who dine or meet in this area will now have easy and safe access to restrooms. Upstairs, new restrooms will be located off the Sunday School wing, directly above the Fellowship Hall restrooms. In addition to being compliant with the Americans with Disabilities Act (ADA), these restrooms will be more spacious and accommodating.

The current upstairs restrooms will remain in place for now. In the future, the women's room, which is connected to the nurs-

ery, will become a family-friendly restroom to better serve our growing number of parents with babies and young children as well as caregivers.

Kitchen Expansion and New Storage Spaces

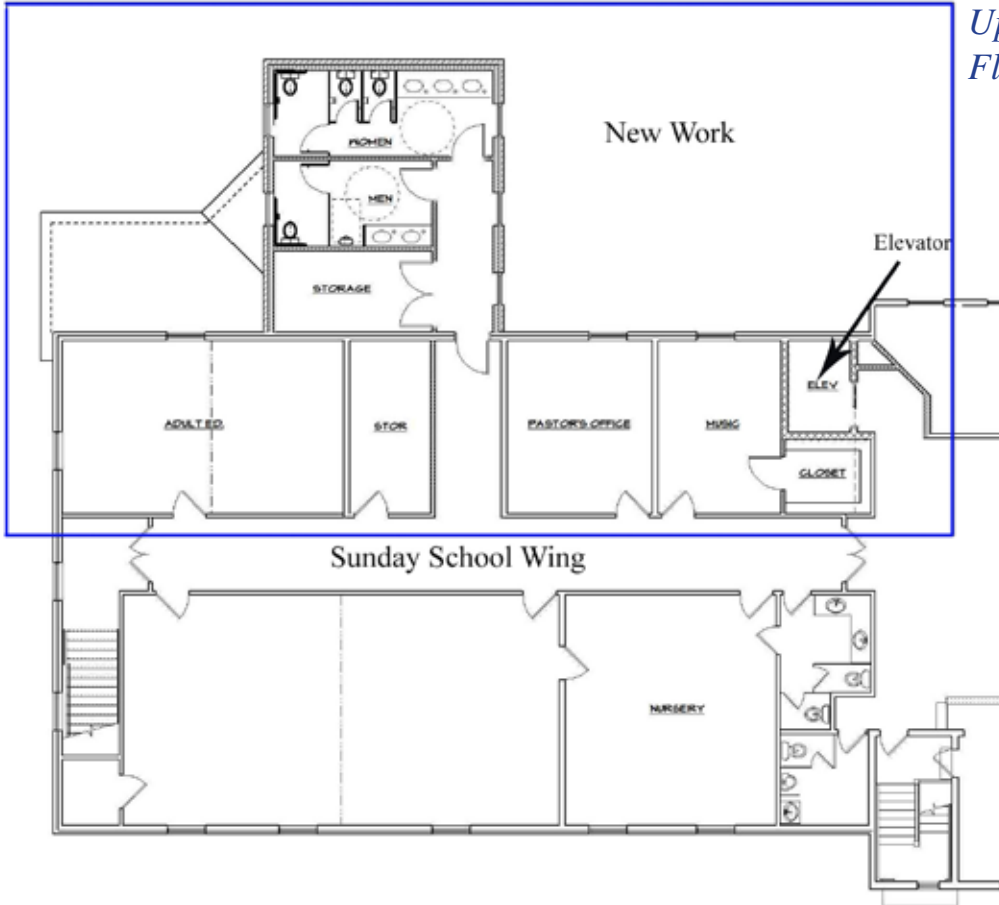
Much needed storage will be added to the kitchen, Fellowship Hall and Sunday School wing. In the Fellowship Hall, an area specially designed to accommodate racks of folding chairs will open directly into the Hall. Upstairs, storage space will be utilized by the Sunday School and choir. An additional 140 square feet of space in the kitchen will create a better floor plan, improved traffic flow and more storage.

Working together, we can make these projects a reality. The enhancements, to be funded by our capital campaign, will truly reach all who worship, visit and meet at Highland for years to come.

BUDGET	
Category	Estimated Amount
Site Work: Excavation, septic, landscaping	\$17,000
General Construction: includes elevator pit and shaft work	\$164,660
Finish work: windows, doors, drywall, tile and carpet, painting	\$44,370
Mechanical: plumbing, HVAC	\$51,330
Electrical	\$19,250
Elevator plus Installation	\$52,390
Kitchen Consultant	\$2,000
Contingency	\$49,000
TOTAL	\$400,000

ARCHITECT'S SKETCHES

*Upper Level
Floor Plan **



YOUR CAMPAIGN COMMITTEE

Committee Co-Chairs
Claudia Scarborough
Wilson Tharpe

Prayer
Carolyn Patrinicola

Promotions
Debbie Bowers
Jenny Lijoi

Commitment
Marilyn Sams

Support
Donna Bahne

Finance
Guy Matta
Marty Whitesel

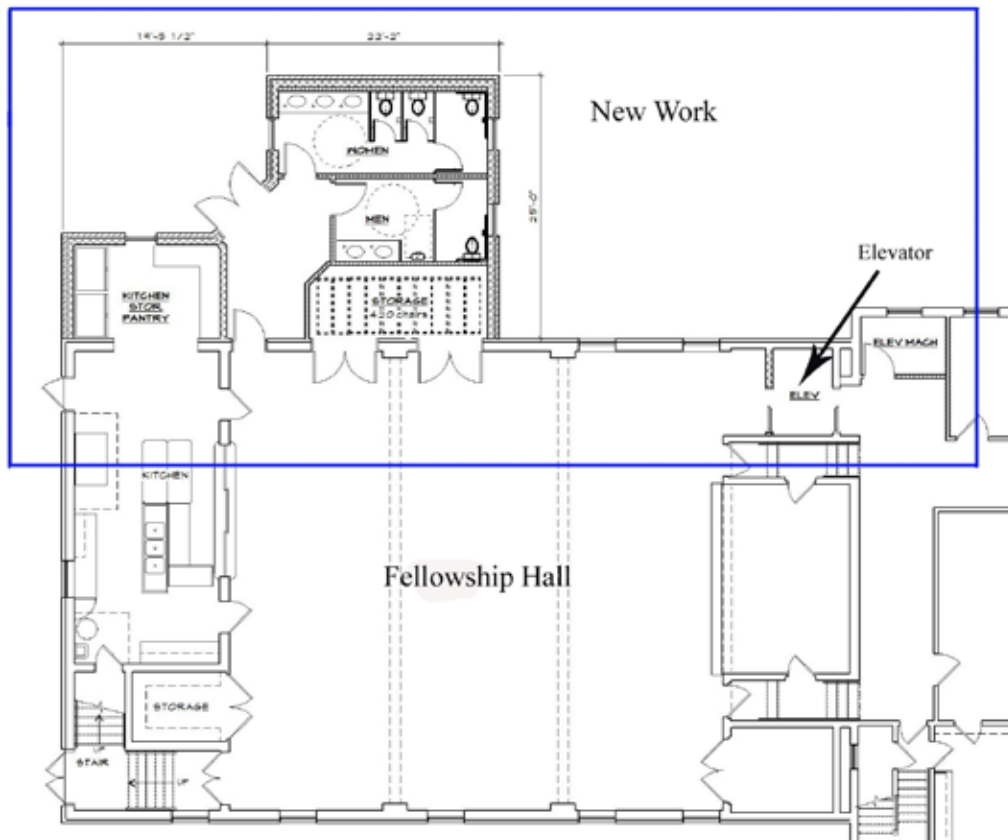
Leadership Gifts
Dave Thompson

Hospitality
Koren Buehler
Lorri Norris

Fulfillment
Wilson Tharpe

Pastor
Rev. John V. Carlson

*Lower Level
Floor Plan **



* Plans are subject to minor changes by the construction committee.